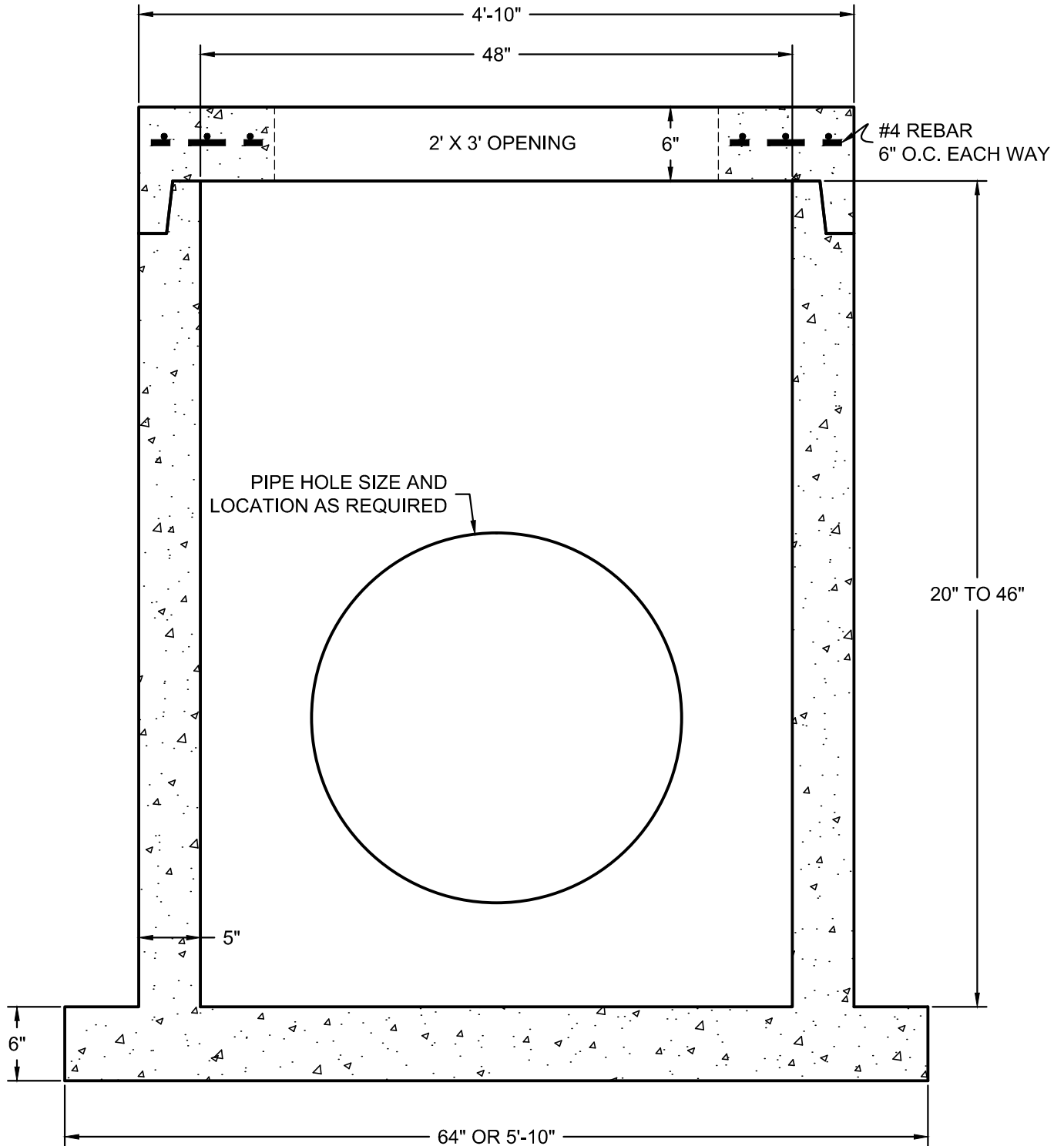




HUNTON PRE-CAST CONCRETE

PO BOX 7091 - MISSOULA, MONTANA - 59807-7091
PHONE 406-543-8640 - FAX 406-549-0727

48"Ø MSLA. STD. CURB INLET
TO ASTM C-478
PRODUCT NO. 309



DESIGN NOTES

1. Concrete: 4,500 psi @ 28 days
2. Manufactured to ASTM C-478 Standards

SCALE: 1" = 1'-0"