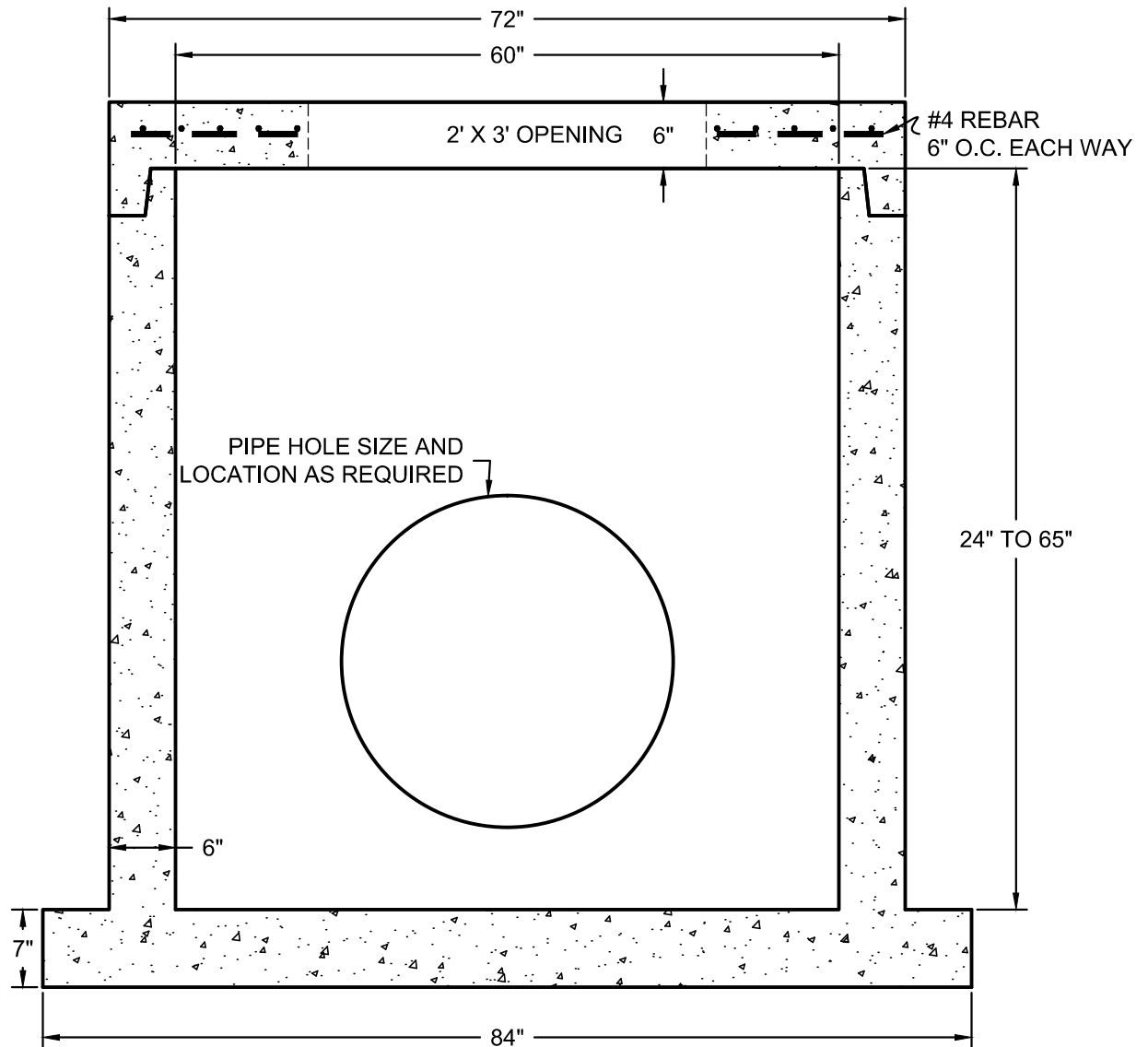




# HUNTON PRE-CAST CONCRETE

PO BOX 7091 - MISSOULA, MONTANA - 59807-7091  
PHONE 406-543-8640 - FAX 406-549-0727

60"Ø MSLA. STD. CURB INLET  
TO ASTM C-478  
PRODUCT NO. 309A



## DESIGN NOTES

1. Concrete: 4,500 psi @ 28 days
2. Manufactured to ASTM C-478 Standards

SCALE: 3/4" = 1'-0"